

10

William A. Tiller

Rationale for an Energy Medicine

MAN'S VIEW OF reality, or "world picture," locks him into a perceptual mode that is an effective jailor. This has its beneficial and stabilizing aspects, but it also has its strongly limiting aspects. At this time, our growth is being severely limited by our prevailing world picture, but we stand poised on the threshold of transition to a new world view that will be much more effective for mankind's next stage of evolution. This paper outlines some experimental data that violate our present world picture and suggests directions of change needed for generating a more appropriate world picture. One of the consequences of the new world picture will be the development of medical therapeutics based upon controlled energy fields. Here, we lay the foundation of the rationale for such therapeutics.

Basic Hypotheses for a New World View

People have come to look toward science as the vehicle for changing their world picture, and, to this author, the potential scientific knowledge of the universe available to man is like a huge iceberg with only a small exposed tip. From the past several hundred years of study, we have come to know the exposed tip fairly well; however, most of Nature still lies hidden from us. Psychoenergetic experiments presently being conducted around the world suggest some fascinating aspects of the hidden portion of this iceberg. From these studies, one can construct

six profound hypotheses that have a dramatic bearing on the structure of our new world picture.

1. There are energies functioning in Nature completely different from those known to us via conventional science and upon which our present technological society is built.
2. The universe organizes and radiates information in other dimensions than just the physical frame that we sense with our five senses. We appear to have latent sensory systems for cognition in these other dimensions.
3. At some of these dimensional levels, we are all connected to each other and to all things on this planet. It is as if we are all part of one vast organism and are just beginning to come awake to ourselves.
4. Time, space, and matter are all mutable; i.e., they can all be deformed. We can perceive events out of our fixed location in space; we can perceive events out of our fixed location in time; we can dematerialize and materialize objects.
5. We do not actually perceive reality at the level of perception of the five physical senses; rather, we perceive the "world of appearances." All we can ask of our science is to provide a set of consistent relationships concerning Nature at this level.
6. At this time, mankind seems to be making the final stages of integration of another sensory system; from observation of his behavioral capacities, it appears as if a biological mutation is taking place.

To briefly illustrate the rationale for the new "world picture," let us consider how medicine, biology, and agriculture have looked at the function aspect of living organisms.

Some of the Cracks Appearing in Our World Picture

Up to the present, medicine, biology, and agriculture have largely viewed living organisms as operating via the following sequence of reactions:

$$\text{function} \rightleftharpoons \text{structure} \rightleftharpoons \text{chemistry} \rightleftharpoons \quad (1)$$

As a modification of eq. 1, there is some growing awareness of the interaction between chemical states and electromagnetic fields; this interaction would be added to the right of eq. 1.

Generally, flaws in the function area have been traced to structural defects in the system, arising from certain chemical imbalances. The rectification procedure has usually been via an adjustment of the chemical environment, with more and more sophisticated chemical complexes being utilized to trigger the organism's defense and repair mechanisms. The dilemma that arises is that both the organism and the threatening invaders adapt to the new chemical complex, becoming progressively less sensitive to it, and so the escalation of potency must continue. One very deleterious aspect of this procedure is that the unnatural chemical content of the organism increases and begins to influence other levels of functioning of the organism than the one being corrected. The effect is particularly serious in the agricultural area, where the method of application of the chemicals is via the soil, so that a chemical equilibration develops between the plants and the soil, percolation of water through the system spreads the chemicals over a large area, and the whole ecosystem begins to suffer from chemical pollution. Clearly, mankind must find a better way of understanding and dealing with flaws of function in living organisms. However, so long as he continues to view living organisms via eq. 1, he is stuck with his present methods.

In searching out alternative procedures for influencing the well-being of living organisms, one must first question the validity or completeness of eq. 1. Are there effective physical, as distinct from chemical, techniques for modifying organismic functioning? Can potential techniques for doing likewise be found in the domain of what would presently be called nonphysical energies? Let us look at a number of observations that reveal the total inadequacy of eq. 1.

The most obvious discrepancy is the neglect of applied electromagnetic fields as a way to influence muscles and organs in the human body. Everyone is familiar with the use of X rays for tumor treatment and of diathermy for muscle relaxation, and we know that osteopathic physical manipulation techniques have had great success with improving human functioning for the past hundred years. In addition, researchers in neuropsychiatry have learned that small electric currents between certain specific points in the brain give rise to the same behavioral changes that are observed with certain specific brain-stimulating chemical intakes.¹ More recently, Becker has shown that small direct electric currents ($1 \mu\mu\text{A}/\text{mm}^2$ to $1000 \mu\mu\text{A}/\text{mm}^2$) cause cell regeneration, tissue repair, and fracture rehealing, whereas direct cur-

rents greater than 10,000 $\mu\mu\text{A}/\text{mm}^2$ cause cell degeneration.² Thus, the first step in modifying eq. 1 is:

$$\text{function} \rightleftharpoons \text{structure} \rightleftharpoons \text{chemistry} \rightleftharpoons \begin{array}{l} \text{electromagnetic} \\ \text{energy fields} \end{array} \rightleftharpoons. \quad (2)$$

In addition, the human body under hypnosis has been found to exhibit truly remarkable feats of strength and endurance attesting to a mind/structure link. In Aikido, Zen, or Yoga disciplines, we see a conscious rather than a subconscious link between mind, structure, and function. On another front, modern psychotherapy shows us that certain chemical treatments influence mental states and certain mental treatments influence chemical states.³ Recent studies have indicated that human acupuncture points, of ancient Oriental description, have different electrical characteristics than the surrounding skin.⁴ It is very easy to show that significant changes occur in the skin electrical potential and impedance when a person shifts among waking, drowsy, and sleep states as well as other hypnagogic states.⁵ In fact, some Soviet investigators utilize concentration techniques to enhance the voltage difference between two acupuncture points from ~ 50 mV to ~ 500 mV as a training technique for developing psychokinetic abilities.⁶ Finally, the recent development of biofeedback techniques shows us that the directed use of mind can allow us not only to exercise control over a variety of autonomic body functions like skin temperature, and pain but also to effect considerable repair of the vehicle.^{7,8} Certainly the experiments in which Jack Schwarz thrust needles through his body and mentally controlled the bleeding attest to this. From the foregoing, there is little doubt that "mind" must be included on the right of our reaction equation; i.e.,

$$\text{function} \rightleftharpoons \text{structure} \rightleftharpoons \text{chemical} \rightleftharpoons \begin{array}{l} \text{electromagnetic} \\ \text{energy fields} \end{array} \rightleftharpoons \text{mind} \rightleftharpoons. \quad (3)$$

Now the going gets a little tougher; for the human body, we have shown a link between what we have called mind forces and the other elements of our reaction equation. We have not demonstrated that these mind forces influence inanimate matter, nor have we demonstrated whether there is an intermediate reaction component between mind and physical energy fields, nor have we shown any unique and distinguishable characteristics of mind. What follows gives

an indication of these missing pieces to the puzzle. However, we must begin to go farther afield to find published supporting data.

Careful studies of the enzyme trypsin have shown that its activity can be altered by placing solutions of it between the poles of a strong magnetic field or between the palms of a "healer."⁹ The effect of the healer's hands was comparable to that found with fields in the range of 10^4 gauss. A more recent study has shown the healer's ability, not only to influence the growth of plants, but also to influence cloud formation with the hands held (a) adjacent to a small cloud chamber or (b) adjacent to a visualization of the same chamber from 600 miles away.¹⁰ Reference to other healers, from Jesus to Arigo, continue to appear in our publications,¹¹ and one study has even noted a change in the electrical impedance of specific acupuncture points on both the patient and the healer as a result of a laying-on-of-hands type of treatment.¹²

Motoyama placed a person who showed psi-ability and a second, ordinary person, in separate rooms shielded by concrete walls lined with lead. Then he had the subject possessing psi-ability concentrate his mind on the other individual while Motoyama made measurements to determine if any changes in bodily functions of the second (ordinary) person had occurred during the period of concentration by the psychic subject. Motoyama found that remarkable changes in the pulse and respiratory rate of the ordinary person were evident during the period of mental concentration by the psychic person (see Fig. 10.1.). Since the two rooms were shielded against physical energy, he deduced that the psi-ability responsible for bringing about these modifications was essentially nonphysical in nature.¹³

From experiments directed towards man-plant communication, we gain more support for the interaction between nonphysical energies and physical energies. One of the most remarkable experiments is taking place in Findhorn, Scotland, where, in barren sandy soil and with a hostile climate, the small community has succeeded in producing dozens of vegetables, flowers, and trees unexcelled in size and beauty. Everything is based on the philosophy that views plants, soil, the natural forces of sun, rain, and wind, plus people, as collective parts of the community of life. Via community meditation, talking to and expressing love and thanks to the plants themselves, and invocation of the aid of elemental nature spirits, the people have created agricultural products that defy conventional explanation.¹⁴ Backster's

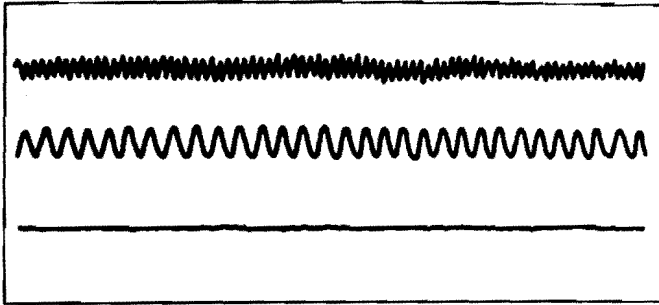


Fig. 10.1 a.) From top to bottom, Plethysmogram and respiratory and galvanic skin resistance recordings in ordinary person occupying shielded room before period of mental concentration by psychic person. (see text)

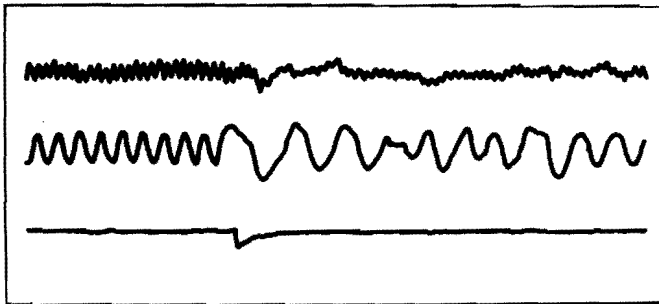


Fig. 10.1 b.) Tracings comparable to those in Figure a after the psychic person's period of mental concentration has begun.

initial work and that of Vogel indicate that an electrical response can be obtained from a plant consistent with the experimenter focusing his mind to project (a) the acts of damaging another plant, (b) the destruction of another life form, or (c) a positive thought form, such as love or healing.^{15,16} Backster postulated the existence of primary perception as a signal linkage between cellular plant life. However, Vogel postulated that the plants must be charged or sensitized by the experimenter's mind energies before being receptive to thoughts and emotions. Since

a recent study showed an inability to reproduce the Backster Effect without a plant sensitization step in the protocol, the Vogel approach may be the more relevant one.¹⁷ Finally, to show our connection to the earth, we note that the Schumann resonance of the global capacitor between the earth and the ionosphere is in the 3 to 14 hertz (H) range, which encompasses the α , β , and θ ranges of the dominant human brain wave patterns.¹⁸ Recent studies have revealed that 10 H electric fields control the human circadian rhythms and that human reaction times are strongly dependent on the specific ELF (extreme low frequency) field being propagated in the local earth environment.¹⁹ In this series of experiments, we see a connectedness developing between living things at more subtle levels of energy than those associated with our physical chemistry.

Turning to the area of psychokinesis (movement of objects with the mind), we find an even greater confrontation with our present world picture. This author observed, firsthand, psychokinetic demonstrations in the Soviet Union by two different people.²⁰ Swann performed two significant experiments in this area: (1) he mentally altered the temperature of a thermister, located a fixed distance from his body, in a pattern consistent with a prescribed coding of hot, cool, neutral, etc.; and (2) he seemingly influenced the decay rate of a very sensitive magnetic field detector at Stanford University, which was located behind vast metallic and concrete shielding.²¹ For fifteen to twenty years, Forwald conducted psychokinetic experiments on small wooden cubes coated with different materials of different thicknesses. He showed an exponential dependence between psychokinetic force and coating thickness plus a proportionality to the neutron number of the coating material.²² Most recently, the demonstrations of Uri Geller led to the identification of groups of children in England, Germany, Switzerland, Japan, and elsewhere who possess similar and perhaps even greater abilities. Taylor has recently described the experiments he has conducted with the young children in England. Perhaps most striking is their ability to mentally bend aluminum bars placed inside sealed transparent perspex tubes. The 1-foot-long, straight bars are seen to change into an S shape that fills the cross section of the 1-inch-diameter perspex tubes; the end cap seals remain unbroken.²³ Clearly, the mind forces can be used to influence not only living systems but inanimate ones as well.

Recent experiments on "remote viewing" have shown that an indi-

vidual can (a) perceive and accurately describe objects placed at a removed location from the perceiver and his line of sight, (b) be given the longitude and latitude coordinates of a location on the earth and accurately describe the terrain of that location even though it is thousands of miles away, and (c) tune in on a specific individual and view a remote locality through that individual's eyes. Interestingly enough, the sensitive individual sometimes perceives the scene before the target individual actually arrives there. The reverse of this process—wherein one chooses a particular target, like a potential oil well, and seeks to know the specific earth coordinates—has also been accomplished.^{24,25} When one uses instrumental assistance, the technique falls in the category of “radionics” and the specific sub-category is called “map dowsing.”^{26,27} Radionics is an instrumental form of radiesthesia (defined as sensitivity to radiations covering the whole field of radiations, physical and nonphysical, from any source either living or inert) and, as such, deals with the interaction of mind and matter and with the complete interrelationship of all things.²⁸

Conventional dowsing studies, wherein a type of wand is used and one walks over the ground being scanned, have shown that the dowsing response is a muscular action connected via a sequence of biological processes to the cause which, in many cases, is a magnetic field gradient. One individual has shown himself to be sufficiently sensitive to respond to a 1-microamp current flowing in a wire imbedded several feet in the ground, as he walks across the wire's location with the magnetic field at the wand level being about 10^{-10} gauss (earth field strength is 0.5 gauss). The seat of the sensing ability in the body appears to be the adrenal glands.²⁹ More recently, a number of U.S. osteopathic practitioners, investigating a subject called kineseology, have shown that specific body muscle tonus changes occur when specific minerals or chemicals are merely held in the left hand or placed on the stomach (the ingredients may be in a glass container). This result is very similar to that which this author has found using a type of dowsing wand called a biomechanical transducer.³⁰

Many studies have been carried out in the areas of telepathy and clairvoyance, and the results attest to their state of function in the human being and in animals.^{31,32} Karagulla has utilized subjects with clairvoyant abilities to observe the “auric” fields around patients and thence describe their state of physical and mental health. These auric fields are perceived as patterns of light of different colors extending

outwards from the body. With some subjects, the patterns can be viewed with the eyes closed or in total darkness.³³

Studies of precognitive awareness are also widespread, and a precognition teaching machine has been developed that allows one to train this ability into subjects, or rather, to enhance the present operating level of this human capacity.³⁴ Experiments being conducted with pyramids of specific shape suggest that such structures are useful for preserving cellular tissue and enhancing the healthy growth of plants, even in total darkness.^{35,36} Combinations of specific shapes and specific materials have been shown to form devices called "psychotronic" generators, which can be charged with biological energy and perform an array of functions that confound conventional understanding.³⁷ This author has directly observed such devices in operation and accepts that they most probably respond to a "new physics."

The foregoing list could be made much longer; however, I hope that the point has been made that eqs. 1 and 2 are inadequate to account for a variety of new (and old) experiences that have occurred in the family of man. Acceptance of this work is difficult for those who have not had experiential awareness of these "other" energies of Nature, and it is somewhat understandable that the results are vehemently rejected in many quarters as violating our collective picture of the universe. Some of the natural criticism about sloppy experimental procedures is justified in specific cases, because it is extremely difficult to develop a completely "clean" protocol for these experiments (we do not yet understand all the key elements of that protocol). In addition, one may be justified in quibbling about the quality of a particular experiment or about the veracity of a given experimenter. However, the body of experimental data of this type is so vast and is growing so rapidly that it cannot be denied much longer. The weight of mounting evidence is so strong as to readily merit a wise man's reflection.

Incorporating the foregoing experimental results, eq. 1 takes the form

$$\begin{aligned} & \text{function} \Leftrightarrow \text{structure} \Leftrightarrow \text{chemistry} \Leftrightarrow \begin{array}{l} \text{positive} \\ \text{space-time} \\ \text{energies} \end{array} \Leftrightarrow \begin{array}{l} \text{negative} \\ \text{space-time} \\ \text{energies} \end{array} \Leftrightarrow \\ & \Leftrightarrow \text{mind} \Leftrightarrow \text{spirit} \Leftrightarrow \text{Divine}. \end{aligned} \quad (4)$$

Electromagnetic, gravitational, and other physical energies function in

the positive space-time frame. Other nonphysical energies function in the negative space-time frame, which is conjugate to the positive space-time frame but in a higher frequency band.³⁸ The mind frame is distinguished from both of these in that energies and pattern formation at this level are not limited by space and time. Thus, we live in a multidimensional universe and are, ourselves, multidimensional beings functioning on many different levels of Nature simultaneously. Man is mostly unaware of these levels of self and cannot grasp the visualization that he has an extended energy structure that interconnects and integrates his beingness with seemingly separate localizations of beingness. We are so chained to our view of reality as perceived by the five physical senses that we are unable to give credence to our true nature. We must come to realize the potential of man as expressed by eq. 4 and to recognize that, if man's energy structure is perturbed at any one of the indicated levels, ripples of effect flow out in all directions to produce corresponding perturbations at all other levels. However, the magnitude of the effect and the time of manifestation of the effect will depend upon things like the intensity of the original signal, the conductivity of the medium of the original signal, and the degree of coherence of wave structures at the boundaries between different levels.

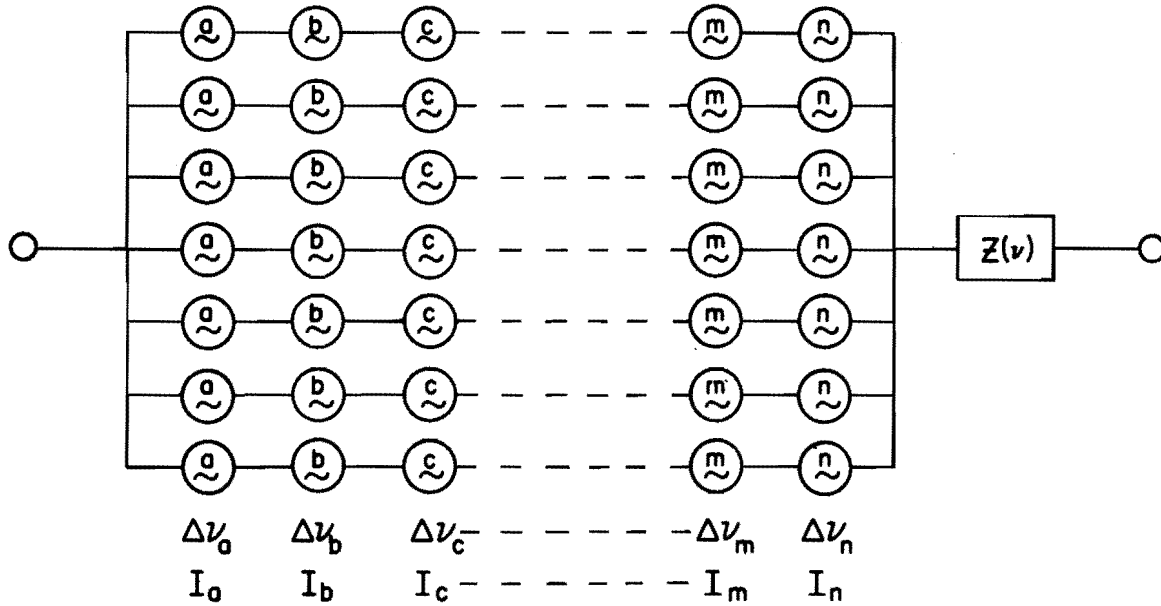
A Perspective on Healing

The foregoing leads quite naturally into a perspective on healing: that pathology can develop at a number of levels and that healing is needed at all of them to restore the system to a state of harmony. The initial pathology begins at the level of mind and propagates effects to both the negative space-time and positive space-time levels. We then perceive what we call disease or malfunction at these levels and try to remove the effects by a variety of healing techniques. The best healing mode is to help the individual remove the pathology at the *cause* level and bring about the correction by a return to "right thinking." The next best healing mode is to effect repair of the structure at the negative space-time level. The third-best level of healing is that which medicine practices today: repair of the structure at the positive space-time level. Since the energy structures at these different levels are coupled, repair at a lower level will still produce some feedback mod-

ification of energy structure at a higher level. However, if harmony is not restored at the higher level, then a force will continue to exist for pathological development in the energy structure at a lower level. Of course, this force is basically like a thermodynamic potential to produce change so that the effects may be manifested or materialized in very different forms depending upon what alterations have already been made to the energy structures of the positive and negative space-time frames. The closest analogy to this can be found in the field of 'phase equilibria' of materials. If a complex alloy containing a number of chemical constituents is heated until it melts and then cooled again, there results a thermodynamic driving force for a phase change, to one of several possible solid forms. By making very slight but specific modifications to the chemistry or cooling rate or other variables in the process, it is possible to change the type of solid phase that initially develops and the crystalline form that results.

When one is healing another, use is made of this extended energy structure of self to channel the needed frequency components of the needed energy at the particular dimensional level into the one to be healed. Since the particular pathology is represented by a particular energy pattern and all patterns are formed by the superposition of waves, a pattern can be altered or completely eradicated by the input of the appropriate wave components at the appropriate intensity level. To do this effectively, a number of conditions need to be satisfied: (1) one must be able to generate or tap the needed wave components of the requisite type, (2) one must be able to tap these wave components from his extended energy structure at the specifically needed ratios of relative intensities, (3) one needs to tap the requisite correction energy pattern at a high overall intensity so that the healing needed is of short duration, (4) one needs to be sharply attuned to the one to be healed so that these energy components can be brought into his extended energy structure without scattering losses and (5) one needs to have the confidence of the one to be healed so that he doesn't mentally distort or undo the healer's efforts because of fears or doubts.

To understand how this is possible and to gain an appreciation for the implications of such healing events, let us consider the necessary structure of an electrical system designed to deliver electrical energy to a load over a broad frequency range with a specific intensity distribution of frequencies. The individual components in the system will be resonators having a restricted band width of frequencies and restricted



DISTRIBUTED POWER SOURCE

Fig. 10.2 Illustration of a composite healing power supply providing broad band and high intensity characteristics

output intensity. Thus, to obtain the required frequency range, a number of different kinds of resonators would need to be coupled in series. To obtain the required output intensity distribution, many resonators of the same kind need to be coupled in parallel. Finally, for this energy to reach the load, the supply must be properly coupled or impedance matched to the load. Such a situation is illustrated in Fig. 10.2. The same type of situation must obtain when we are using biological resonators in the healing mode. The implication is that the extended energy structure of the healer must include a number of different biological resonators functioning on basically different but overlapping frequency bands integrated into a functioning energy system. Further, as the healer expands his consciousness to resonate over a larger frequency range and builds himself to transmit energy at higher intensities, he will become more effective as a healing channel.

In concluding this paper, we note that energy patterns at different dimensions of the universe sustain the chemical patterns we observe at the physical level. In the future, to alter the chemical pattern that we perceive as disease, we may input a hierarchy of energies to the body. We shall see that the energy pattern, rather than simply the energy amplitude, becomes the important consideration. As we develop monitors and eventually generators of these "other" energies, we will be in a position to develop medical therapeutic devices for benefiting mankind at more subtle levels than those associated with present conventional medicine.

Notes

1. D. E. Woolridge, *The Machinery of the Brain* (New York: McGraw-Hill, 1963).
2. R. D. Becker and D. G. Murray, "The Electrical Control System Regulating Fracture Healing in Amphibians," *Clinical Orthopedic and Related Research* 75 (1970): 169.
3. D. Hawkins and L. Pauling, *Orthomolecular Psychiatry* (San Francisco: W. H. Freeman, 1973).
4. M. A. Reichmanis, A. Marino, and R. O. Becker, "Electrical Correlates of Acupuncture Points" *IEEE, Transactions on Biomedical Engineering* BME 22 (November 1975): 533.
5. W. A. Tiller, "Some Physical Network Characteristics of Acupuncture Points and Meridians" (Paper delivered at the Symposium on

- Acupuncture, Academy of Parapsychology and Medicine, Stanford University, Palo Alto, Calif., June, 1972).
6. V. Adamenko, private communication, Soviet Union, September, 1971.
 7. E. Green, "Biofeedback for Mind-Body Self Regulation: Healing and Creativity" (Paper delivered at the Symposium on Varieties of Healing Experience, Academy of Parapsychology and Medicine, De Anza College, Cupertino, Calif., October, 1971).
 8. B. B. Brown, *New Mind, New Body—Biofeedback: New Directions for the Mind* (New York: Harper and Row, 1975).
 9. Sister M. Justa Smith, "The Influence of Enzyme Growth by the 'Laying-on-of-Hands'" (Paper delivered at the Symposium on Dimensions of Healing, Academy of Parapsychology and Medicine, Los Altos, Calif., 1972).
 10. R. N. Miller, P. B. Reinhart, and A. Kern, *Thought As Energy*, ed. W. Kinnear (Los Angeles: Science of Mind Publications, 1975).
 11. A. Puharich, "The Search for a Common Denominator in Medicine and Healing" (Paper presented at the Symposium on Dimensions of Healing, Academy of Parapsychology and Medicine, Los Altos, Calif., 1972).
 12. W. A. Tiller, "Some Psychoenergetic Devices" (Paper delivered at the Seventh Annual Medical Symposium on New Horizons in Healing, A.R.E. Clinic and the Edgar Cayce Foundation, Phoenix, Ariz., January 1974).
 13. H. Motoyama, "The Mechanism by which PSI-Ability Manifests Itself," *Impact of Science on Society* 24 (1974): 321.
 14. P. Tompkins and C. Bird, *The Secret Life of Plants* (New York: Harper and Row, 1972).
 15. C. Backster, "Evidence of Primary Perception in Plant Life," *International Journal of Parapsychology* 10 (Winter 1968): 329.
 16. M. Vogel, "Man-Plant Communication," in *Psychic Exploration*, ed. E. D. Mitchell and J. White (New York: G. P. Putnam's Sons, 1974).
 17. K. A. Horowitz, D. C. Lewis, and E. L. Gasteiger, "Plant 'Primary Perception': Electrophysiological Unresponsiveness to Brine Shrimp Killing," *Science* 189 (1975): 478.
 18. W. O. Schumann, "Über die Strahlungslosen Eigenschwingungen einer leitenden Kugel die von einer Luftschicht und einer Ionosphärenhülle umgeben ist," *Z. Naturforsch* 7a (1952): 149.
 19. H. König, "Biological Effects of Extremely Low Frequency (ELF) Electrical Phenomena in the Atmosphere," *Journal of Interdisciplinary Cycle Research* 2 (1971): 317.

20. W. A. Tiller, "A.R.E. Fact Finding Trip to the Soviet Union," *A.R.E. Journal* 7 (1972): 68.
21. I. Swann, *To Kiss Earth Good-Bye* (New York: Hawthorn, 1975).
22. H. Forwald, *Mind, Matter and Gravitation* (New York: Parapsychology Foundation, 1969).
23. J. Taylor, *Superminds* (London: Macmillan, 1975).
24. I. Swann, *op. cit.*
25. R. Targ and H. Puthoff, "Information Transmission under Conditions of Sensory Shielding," *Nature* 252 (1974): 602.
26. L. Day and G. de la Warr, *Matter in the Making* (London: Vincent Stuart, 1966).
27. L. Day and G. de la Warr, *New Worlds beyond the Atom* (London: Vincent Stuart, 1956).
28. W. A. Tiller, "Radionics, Radiesthesia and Physics" (Paper delivered at Symposium on the Varieties of Healing Experience, Academy of Parapsychology and Medicine, Los Altos, Calif., 1972).
29. Z. V. Harvalik, "Sensitivity Tests on a Dowser Exposed to Artificial D. C. Magnetic Fields," *American Dowser* 13, no. 3 (1973): 85. *Ibid.* 14, no. 1 (1974): 4.
30. W. A. Tiller and W. Cook, "Psychoenergetic Field Studies Using a Biomechanical Transducer" (Paper delivered at the A.R.E. Medical Symposium on New Horizons in Healing, Phoenix, Ariz., January, 1974).
31. R. Targ and H. Puthoff, *op. cit.*
32. S. Ostrander and L. Schroeder, *Psychic Discoveries behind the Iron Curtain* (New York: Prentice-Hall, 1970).
33. S. Karagulla, *Breakthrough to Creativity* (Los Angeles: De Vorss, 1967).
34. H. Puthoff and R. Targ, "Psychic Research and Modern Physics," in *Psychic Explorations*, ed. E. D. Mitchell and J. White (New York: G. P. Putnam's Sons, 1974).
35. S. Ostrander and L. Schroeder, *op. cit.*
36. G. Milne, *The Pyramid Guide* 18 (1975): 5.
37. D. Hawkins and L. Pauling, *op. cit.*
38. W. A. Tiller, "The Positive and Negative Space-Time Frames as Conjugate Systems" (Paper delivered at the A.R.E. Medical Symposium, Phoenix, Ariz., January, 1975).